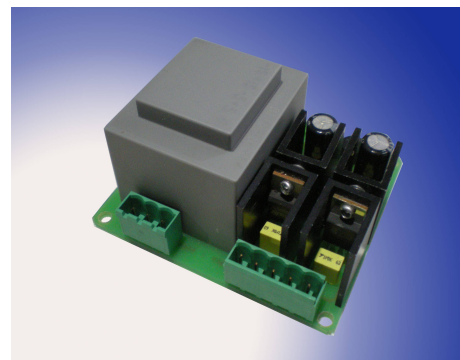


PRELIMINARY TECHNICAL INFORMATION
HIGHLIGHTS

- ready to use
- short delivery time
- protection fuse included
- suitable for SC2022 card



non-contractual photo

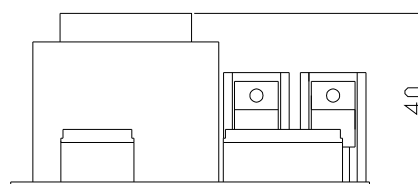
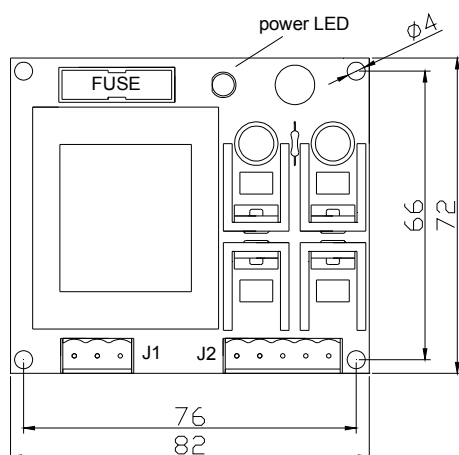
GENERAL DESCRIPTION

SCFA is a 6W linear power supply. It was initially designed to supply the *semicode*[®] thyristor firing boards, but it has general purpose. It could be supplied at 230 or 400Vrms. Output voltages are factory set depending on the reference. Other output values are available under request

SCFA references	output voltages
SCFA 2x15	±15V
SCFA 2X12	±12V
SCFA 2X15-2X5	±15V& ±5V
SCFA 2x12-2X5	±12V & ±5V

SPECIFICATIONS

description	symbol	conditions & notes	min	typ	max	units
max. current for each DC output	$I_{OUTmax\ DC}$	<i>note 1</i>	-200		200	mA
output voltage tolerance		±12V & ±15V output	-0,5		0,5	V
		±5V output	-0,2		0,2	
output voltage ripple	ΔV_o	$I_{OUT\ DC}=200mA$		10	150	mV
AC to DC isolation voltage	V_{ISO}		3750			V_{AC}
weight	W			400		gr

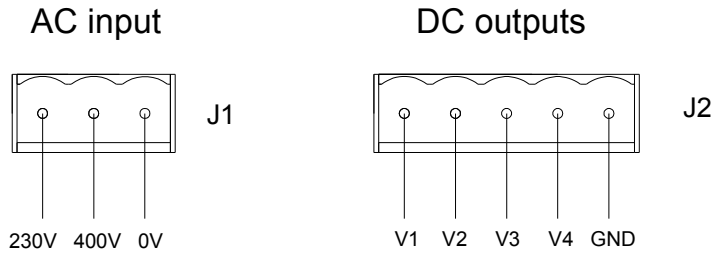
DIMENSIONS & PLACING


all dimensions are in millimeters

100708 Rev.:0

note 1: this current is measured with only single symmetrical output load (±15V or ±12V), for dual symmetrical output load (±15V, ±5V or ±12V, ±5V), the total output power 6W limitation must be considered.

ELECTRICAL CONNECTIONS



J2 connector

SCFA reference	V1	V2	V3	V4	GND
SCFA 2x15	nc	+15V	nc	-15V	0V
SCFA 2X12	nc	+12V	nc	-12V	0V
SCFA 2X15-2X5	+5V	+15V	-5V	-15V	0V
SCFA 2x12-2X5	+5V	+12V	-5V	-12V	0V

Cost Effective Products

SEMICODE ELECTRONICA

Offers to the market a comprehensive range of products from recognized manufacturers at the best price/quality relationship, this products are provided with a basic reference code that allows maintaining the same product reference even if the original device manufacturer is replaced. SEMICODE product reference has to be considered as a generic brand.

Seeking the market needs and trends, we are constantly increasing the product portfolio with new products and suppliers, please ask for the updated information available to our local contacts.

SEMICODE products include semiconductors, passive components and accessories focused in power electronics market.

Datasheet Annotations:

SEMICODE ELECTRONICA annotate datasheets in the top left hard corner of the front page, to indicate product status. The annotations are as follows:

Tentative information: This is the most tentative form of information and represents a very preliminary specification. No actual design work on the product has been started.

Preliminary Information: The product is in design and development. The datasheet represents the product as it is understood but details may change.

Advance Information: The product design is complete and final characterisation for volume production is well in hand.

No Annotation: The product parameters are fixed and the product is available to datasheet specification.

NOTICE: The technical data are to specify components, not to guarantee their properties.No warranty or guarantee expressed or implied is made regarding delivery or performance. The Company reserves the right to alter without prior notice the specification of any product. Information concerning possible methods of use is provided as a guide only and does not constitute any guarantee that such methods of use will be satisfactory in a specific piece of equipment. It is the user's responsibility to fully determine the performance and suitability of any equipment using such information and to ensure that any publication or data used is up to date.

All brand names and product names used in this publication are trademarks, registered trademarks or trade names of their respective owners.

© SEMICODE ELECTRONICA 2008. TECHNICAL DOCUMENTATION – NOT FOR RESALE